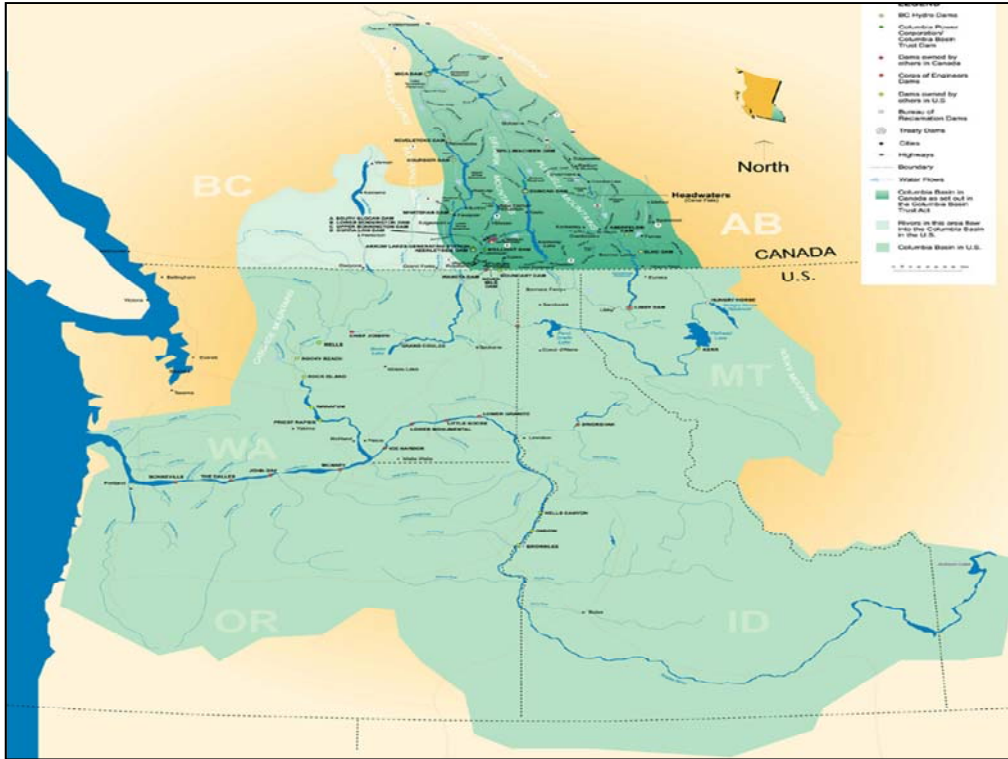




## Communities Adapting to Climate Change Initiative (CACCI)

[WWW.CBT.ORG](http://WWW.CBT.ORG)





## CACCI: Learning and Improved Tools

### Learning

- Lighter planning process
- Mainstream adaptation
- Mutual learning among communities
- CACCI Think Tank 2010

### New & Improved Tools

- CACCI Team
- Online “Adaptation Resource Kit”
- “Adaptation Discovery Tool”
- One day “Scanning & Planning Workshop”
- Technical Support Team



The year long adaptation planning work undertaken by phase 1 & 2 communities were intensive, and resulted in concrete adaptation plans for the communities involved. They also yielded tremendous learning about how to support adaptation planning at the community level. That learning has been useful for us here in the Basin, but has also been recognized internationally!

The “Think Tank” in 2010 was a a great opportunity to pull together the extensive learning that has taken place and use that to shape phase 3 of this initiative.

- Communities have emphasized the need for “lite”er, less onerous planning processes that “mainstream” adaptation planning by linking it to other planning processes

- Another big **change is that CACCI is being run by a three-person Team**– Ingrid liepa, Jeff Zukiswky and Kate Mahoney, rather than a coordinator working with coordinators in each municipality.

- The **online Adaptation Resource Kit**, that some of you may be familiar with has been completely revamped and is a great source of information and practical tools to support adaptation planning at the community level.

- The **Adaptation Discovery Tool** is a synthesis of the analysis and action plans produced by the five communities that undertook comprehensive planning processes.

- The **One Day Scanning and Planning Workshop** is designed to support rapid action planning on climate change adaptation for communities that are ready and keen to tackle adaptation planning. Because time is not invested in engaging people, it is critical that the right people, with the local knowledge about how things work in the community are at the table and ready to focus on adaptation planning.

- One of our biggest assets and resources is the **Technical Support Team**: It includes 16 members– academics, scientists, engineers, provincial ministry staff, researchers, and community engagement experts--people who can bring expertise directly to communities. The Technical Support Team brings professional high level climate science and a global perspective to the local level. These are volunteers who support generously give their time to support this initiative at the community level.

- We also have an **Advisory Committee** that provides strategic guidance to the initiative.



The Adaptation Resource Kit has been completely revamped to make it more accessible and easier to navigate.

It includes:

- General information about the initiative, resources and links to key sections and documents
- Recent and reliable climate change projections for the Columbia Basin
- Primary and secondary impacts and possible adaptation actions
- An overview of this initiative phases 1, 2 & 3 including case studies, action plans from phase 1 & 2 communities
- Information on adaptation planning approaches

This is a living compilation of tools that are being used by communities and we welcome input on user needs. If you are looking for something and it is not there, please let us know!

### 1. Implementation support for Phase 1 & 2 communities

#### 1. Engagement of new communities in adaptation planning

- Quicker “lite” process – Scanning & Planning Workshops
- Linked with other community process where possible
- Technical & financial support for adaptation planning & implementation
- Links with relevant CBT initiatives and funding streams

#### 2. Provision of credible and current information climate change science

- Continuing the Dialogue
- Learning Network

### 1. CBT will continue to support Phase 1 & 2 communities—Initially we will work with technical staff in each community to identify challenges or gaps in implementing their action plans as well as successes and good practices.

- Review of challenges and gaps will help us to identify what further technical assistance would be most useful.
- Documentation of good practices with details on how to implement them from within and beyond the basin will serve to build capacity for Basin communities.

### 1. **Engagement of new communities** is focused on making adaptation planning more practical and accessible.

This means:

- Quicker “lite” process – Scanning & Planning workshop
- Linking Adaptation planning with other community processes where possible

How will it work?

- CBT partners with communities interested in adaptation planning and the CACCI team facilitates Scanning & Planning workshops, These are prerequisite for further funding and technical support. These can be done as a stand alone initiative or linked to another process such as OCP or sustainability planning.
- Following the workshop the CACCI Team work with the community to develop projects for further planning or initial implementation of adaptation measures.
- CACCI can provide up to \$6,000 on matching Funds (\$6,000), plus technical assistance and facilitation to support implementation of climate change adaptation planning or implementation. We can also link with other relevant CBT initiatives and funding streams when appropriate— for example if a community identifies water conservation as an important adaptation strategy WaterSmart may be a good resource help.
- CACCI just completed three workshops— with RDEK, Sparwood and Revelstok in early November 2011.

### 2. **Ongoing communication** of credible and current information on climate change science.

- We are updating the original document “Starting the Dialogue; “Continuing the Dialogue” will be published in January 2012.
- We are also planning, in coordination with other CBT water and environment initiatives, to provide briefings for the new councils in January and February.
- In the meantime we will continue to communicate directly with the Learning Network--through regular newsletters and webinars



## Local Government Partnership

### CBT provides:

- Facilitation & community engagement
- CACCI funding up to \$6,000
- Links with other CBT initiatives
- Technical support
- Climate change expertise
- Coordination support



### Local government provides:

- Commitment to the process
- Resources
- Staff time
- Matching funds
- Community contact & steering committee

CBT work in communities through partnership with local government.

### CBT provides:

- Facilitation & community engagement
- CACCI Funding of up to \$6,000
- Links with other CBT funding streams
- Technical support
- Climate Change expertise
- Coordination support

### Local government provides:

- Commitment to the process
- Resources
- Staff time
- Matching funds
- Community contact & Steering Committee



## How new communities can participate

1. Participate in Scanning & Planning Workshop
  - Round 1 Nov 2011
  - Round 2 Feb 2012
2. Refine adaptation action & develop project
3. Apply for CBT CACCI funding
  - Round 1 Jan 15, 2012
4. Implement!
  - Jan-May– and beyond

So, How can new communities get involved? Communities that have interest and commitment are welcome to engage!

### **Step 1:** Apply for Scanning & Planning Workshop

- You can let us know informally of your interest and commitment via email to Kate Mahoney at [adaptation@cbt.org](mailto:adaptation@cbt.org).
- This should be followed up with a letter of commitment from the Mayor or Director designating a contact person and indicating availability for the workshop, which ensures ensures that the key people with the local contextual and technical knowledge can be involved and dedicate their time to the workshop itself, follow up and project development and implementation.
- Communities will be selected based on their commitment and level of engagement

### **Step 2:** Schedule and hold scanning & Planning workshops

- Round 1: took place in Nov 2011
- Round 2: will take place in Feb-March 2011

### **Step 3:** Develop adaptation planning or implementation project

- The workshops will result in an action plan for implementation and/or more in depth planning.
- The CACCI Team will work with technical staff in the community to develop a project concept for CACCI funding, with possible links to other CBT initiatives such as Water Smart or Carbon Neutral Kootenays

**Step 4:** Communities that have gone through the scanning & planning workshop are eligible to apply for support -- matching funds: of \$6,000 plus Technical Support Applications are due **15 January 2012**.

**Step 5:** Implement (Jan-May 2012– and beyond)



Partnerships = success

Contact Information:  
[www.cbt.org/climatechange](http://www.cbt.org/climatechange)  
 CBT Phone: 1 800 505 8998  
 Email: [adaptation@cbt.org](mailto:adaptation@cbt.org)

Partnerships

- Facilitate mutual learning
- Bring high level climate science to the local, community level.



Collaborative for Advanced Landscape Planning








As mentioned earlier– Partnerships are central to how CBT works and are very important for this initiative. We are very grateful for the ongoing support of these organizations.

I would also like to acknowledge and thank our Advisory Committee and Technical Support Team members for sharing their expertise and experience so generously– we couldn't be effective in communities without you.





## Communities Adapting to Climate Change

**Thank You!**

Questions?

We now have time for questions. We will turn the audio back on to enable you to ask questions– Please indicate that you have a questions by:  
Using the icon on your screen to raise your hand.